

Mিনny 16



... is more!



 **FIMAP**[®]
Italian customized cleaning

Mিনny 16.

More sales opportunities... with less effort!

It is suitable for maintenance cleaning
in areas up to 800 sq m with many obstacles
that are currently still cleaned using manual methods

Benefits

Considerably shorter
time required
to clean the same
surface

Highest safety for the
operator thanks to full
compliance with
European standards

Thanks to extreme
user-friendliness, no skilled
personnel is required.
No fatigue for the operator
so that higher productivity
is ensured

Thanks to its extreme
simplicity, minimum
maintenance
is required

Excellent cleaning
and
sanitation results

Suitable for which environments?

AUTOMOTIVE SECTOR

Small showrooms
of car repair shops,
Car electricians,
Tyre dealers,
Machine shops,
Car body shops,
etc.

SERVICES

Service stations/rest areas,
Religious institutions,
Shops,
Sports facilities
(swimming pools,
gyms, locker rooms),
etc.

PUBLIC BODIES

Offices,
Schools,
Libraries,
Barracks,
etc.

TRADE

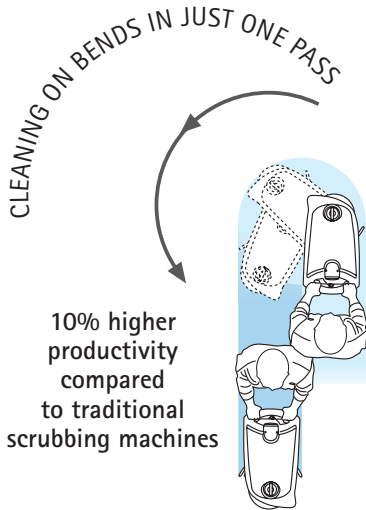
Small shopping centres,
Supermarkets,
Delicatessen,
Bakeries,
Food shops,
etc.



Mিনny 16.

More cleaning... with fewer passes!

Mিনny 16 is a floor scrubbing machine which provides excellent manoeuvrability. Its large diameter wheels make it easy to move around in areas with many obstacles and ensure easy transportability.



Mিনny 16 is more productive on bends!
Thanks to its small size, Minny 16 can very easily turn 360 degrees so to clean the turning area in just one pass...

... and effortlessly clean around corners too



Mিনny 16, thanks to its extremely large wheels, can easily get over the steps



Mিনny 16

Better hygiene... with less effort!

The suction motor combined with the squeegee ensures excellent drying results.



Parabolic squeegee swinging around the brush

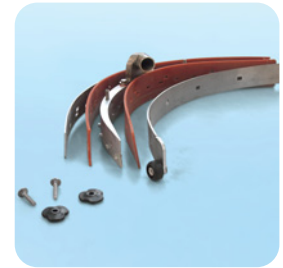


Parabolic squeegee at rest



Parabolic squeegee swinging to the other side

Mিনny 16 ensures perfect drying even on bends, thanks to its patented parabolic squeegee swinging around the brush



- In order to ensure excellent drying performance, the squeegee rubbers should be kept always clean. When worn out, they are very easy to replace

Mিনny 16 thoroughly removes dirt



Water outflow from the centre of the brush

- Excellent drying performance also thanks to water outflow from the centre of the brush which prevents splashes of water on the floor



Mিনny 16. Greater holding capacity.. in smaller space!



Mিনny 16.

Greater autonomy... with lower energy consumption!

Mিনny 16 is a battery powered machine and that's why it is suitable for narrow spaces with many obstacles. The battery - when flat - can be easily replaced with a new one so that the machine provides longer operating cycles. Good operating autonomy is also provided by the large capacity of its tanks: 20 litre solution tank and 20 litre recovery tank.



Automatic squeegee and brush adjusting system



Thanks to the automatic squeegee and brush adjusting system, the machine can automatically adjust to any type of floor. The front wheel ensures constant brush pressure on the floor so that the brush motor is not overstressed and low energy consumption is guaranteed

Mিনny 16 comes with a 12V/6Ah built-in battery charger

During recharging, Minny 16 is completely isolated, so that no high-voltage electricity gets into the machine circuit

With the new additional external battery charger, Minny 16 provides twice the operating autonomy



Recharging operations are extremely easy and you just have to plug the battery charger cable into a normal mains socket



For Minny 16 an additional battery charger - with battery included - is also available so that recharging becomes extremely simple. Thanks to the additional battery, the operating cycle of the machine can become twice as long. (optional extra)

Mিনny 16.

Greater user-friendliness... with less skilled operators!

Mিনny 16 is user-friendly:
just fill up the solution tank with water and detergent,
fit the brush and lower the squeegee to start operating.



- Lever for easy squeegee lifting and lowering



- **Automatic brush coupling system.**
Just a light impulse of the brush motor control is enough to couple and release the brush automatically

Mিনny 16.

Greater saving... with less maintenance!

Thanks to the simple structure of Minny 16, maintenance procedures **do not require any tools.**

USER-FRIEDLY! During ORDINARY maintenance procedures!



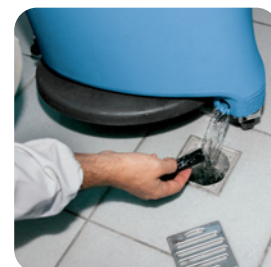
- Easy cleaning of the recovery tank through its practical discharge hose



- Periodic cleaning of the squeegee hose to ensure efficient suction



- Simple and practical thorough cleaning of the suction filter



- Cleaning of the solution tank filter

USER-FRIEDLY! During EXTRAORDINARY maintenance procedures!



- Lowering the brush head assembly into the operating position

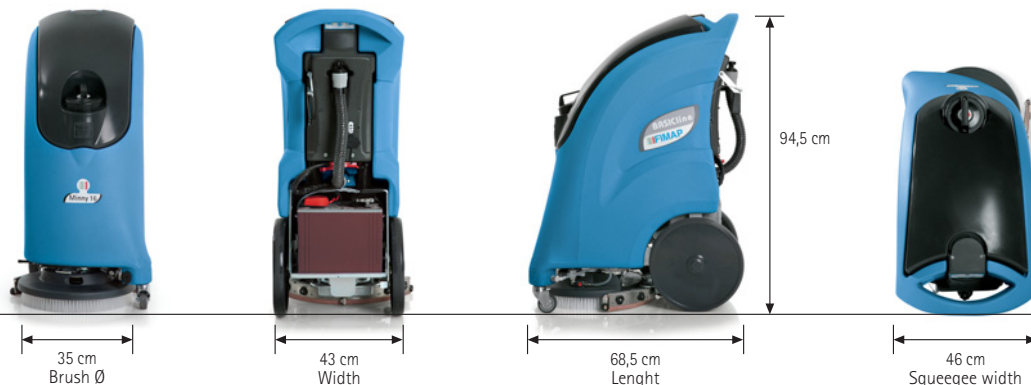


Miny 16 comes in the Basic Line version

BASICline



Miny 16 comes complete with:
gel battery, built-in battery charger and brush or pad holder



| TECHNICAL DESCRIPTION | | MINNY 16 |
|---|-----|---------------------|
| Electromagnetic compatibility - Emission standard | | EN 61000-6-3 (2002) |
| Squeegee width | mm | 440 |
| Brush Ø | mm | 350 |
| Brush motor | V/W | 12/250 |
| Brush rpm | rpm | 140 |
| Brush pressure | kg | 20 |

| TECHNICAL DESCRIPTION | | MINNY 16 |
|--|-----|-------------|
| Suction motor | V/W | 12/250 |
| Type of drive | | semi aut. |
| Battery compartment dimensions (L x h x w) | mm | 180-235-286 |
| Max gradient at full load | % | 2 |
| Battery | V/A | 12/60 |
| Battery weight | kg | 25 |
| Machine weight (without battery) | kg | 42 |

Manufacturing Miny 16 with plastic materials, aluminium and steel provides full anti-rust protection.
Miny 16 is also made from high quality components which offer excellent reliability.

| BASIC LINE | | | | | | | | | |
|------------|---|------------------|-------------------|--------------------|-----------------|-----------------|---------------------------------------|------------------------------------|--------------------------|
| | Electromagnetic compatibility Emission standard | Working width cm | Number of brushes | Supply V/ traction | Solution tank l | Recovery tank l | Working width up to m ² /h | Machine dimensions in mm L x h x w | weight with batteries kg |
| MINNY 16 | EN 61000-6-3 (2002) | 35 | 1 | 12/ semi aut. | 20 | 20 | 1050 | 685 945 440 | 67 |

For any additional information or for a demo please contact your usual Fimap dealer

Dealer's stamp

FIMAP[®]
Italian customized cleaning
www.fimap.com

Fimap Spa reserves the right, at anytime, to make technical and/or equipment modifications without prior notification.
The images are shown as reference only and are not binding as to the actual design and/or equipment - Copyright © Fimap 2007
COD. 301381 - 11-2007

An ISO 9001-2000 Organisation certified by Q.C.B. Italy

FIMAP spa - Via Invalidi del Lavoro, 1 - 37050 S. Maria di Zevio - Verona - Italy
Tel. +39 045 6060411 - Fax +39 045 6060417 - E-mail: fimap@fimap.com

00800-05070000